



SAFETY BAY SENIOR HIGH SCHOOL

imagine believe achieve

Enrolment Information





Artwork by
Safety Bay Senior High School student,
Kyra Ugle

Contents

- 01 **Principal's Welcome**
- 02 **School Board Welcome**
- 03 **Imagine, Believe, Achieve**
 - *Commitment to Culture*
- 04 **About Safety Bay Senior High School**
 - *Timetable, Clubs, Student Leadership Team*
- 05 **Learning**
 - *Pathways, Learning Areas*
- 07 **Cheer-Dance Specialist Program**
- 08 **Football Specialist Program**
- 09 **Special Music Program**
- 10 **Pathfinder Academic Excellence Program**
- 11 **Thrive Program**
- 12 **Student Data**
 - *NCCD, Creating a USI*
- 13 **Transitioning from Primary to High School**
 - *Communication*
- 14 **Student Services**
 - *Good Standing, Attendance*
- 15 **Uniform Guidelines**
- 17 **Positive Peer Relationships**
- 18 **Technology in School**
 - *Mobile Phone Policy, Photo Permissions*
- 19 **Online Usage**
- 20 **Third Party Service Providers**
- 21 **Transport**
 - *Carparks, Scooters/Bikes, SmartRiders*
- 22 **Additional Information**
 - *Insurance, Canteen, Booklists, Social Media*
- 23 **Contributions and Charges**
- 24 **School Map**



Principal's Welcome

Dear Prospective Family,

On behalf of the entire school community, I extend a warm welcome to you and your family. At Safety Bay Senior High School, we believe in fostering a culture of student excellence, innovation, care and collaboration. We encourage our students to be lifelong learners, critical thinkers and responsible global citizens.

We are committed to providing a supportive and stimulating learning environment where every student can thrive academically, socially and emotionally. Our goal is to empower students with the knowledge, skills and values needed to succeed in a rapidly changing world, ensuring our teaching and learning approaches are evidence-based and designed to meet the needs of every student. Our practices are regularly reviewed to ensure that we are providing the highest quality instruction for your child.

Our school implements high expectations for all our students, staff and families. We have a dedicated team of staff who work collaboratively to create a culture that enables all students to reach their full potential. We have established a clear set of expected student behaviours that are consistently implemented in every classroom across the school.

Our school places a significant focus on student pathways and supporting your child to discover, dream and explore their future. We have strong links with post-school training, tertiary education and employment. Whether that pathway is ATAR, General or VET/Industry Links, there is something for everyone.

This package outlines the key steps involved in the enrolment process including course selection, required documentation and essential information. Please take your time to review the information carefully and do not hesitate to reach out if you have any questions or further assistance from our staff.

I look forward to meeting you soon.

Kind Regards,

Jessica Halliday
Principal



School Board Welcome

I extend a warm welcome to all new students and their families.

The School Board, in conjunction with the Principal, ensures the school fulfils its educational responsibilities, oversees the strategic direction of the school and provides input into initiatives to improve outcomes for students.

Our School Board comprises staff, parents and community members with a diversity of expertise in vastly different knowledge and skills-areas, each of which provides unique opportunities and viewpoints. The School Board looks forward to supporting the school in continuing its long and proud history of providing for a wide variety of students in the local community.

Make sure you check our school website, Facebook page, Instagram account and Compass to stay informed, and for ways you can contribute and be involved in our Safety Bay Senior High School community.

On behalf of the School Board, we look forward to a successful partnership with you, to support The Safety Bay Way.

Kylie Shailer
Chairperson



Safety Bay Senior High School is an Independent Public School offering students quality public education that will open the door to future opportunities, whether in the workplace or further education and training.

Established in 1978, we have been part of the Safety Bay community for over forty years and now cater for over 1200 students ranging from Year 7 to Year 12. We have a proud history of producing successful graduates who contribute to the community on a local, national, and global scale.

At Safety Bay Senior High School, our vision is to enhance the opportunities available to our school community and to provide meaningful future pathways of success. We believe everyone has the right to access learning, behaviour, and mental health & wellbeing support needed to thrive and contribute in school, at home, in the community and throughout life.

Safety Bay Senior High School prides itself on diversity, care and respect everyday... it's The Safety Bay Way!

Commitment to Culture

Safety Bay Senior High School is proud of our First Nations people and their role in educating each and every one of us. This is an area we all strive to keep learning about and we encourage all to share their knowledge and be part of our development, educationally and culturally.

The Safety Bay Senior High School Cultural Centre offers a place where students can be themselves, in a safe and caring environment. The school takes pride in encouraging First Nations students and their parents to become involved in daily schooling activities.

Safety Bay Senior High School's First Nations students have access to the Follow the Dream Tutorial Program (funded by the Polly Farmer Foundation in partnership with the Department of Education), giving them access to free tutoring in Maths, HASS, English and Science, with exceptional staff to help. In addition to this, we also work closely with the East Metropolitan Health Service to run the Strong Spirit Strong Mind/ Moorditch Wirrin Koolankas Program with our First Nations students, teaching them about healthy habits, the risks and harm related to drugs/alcohol, relationships, sexual health, and culture including the Noongar language and artefacts.

Ngany kaadadjiny Noongar birdiya maaman, yoka, koolangka koora koora yeyi djoowak. Nidja Noongar boodja-k ngany nyin.

I acknowledge and pay respect to the Noongar Elders, men, women, and children past, present and future. This is Noongar country I sit upon.



About Safety Bay Senior High School

School Timetable

PERIOD	MONDAY	TUESDAY	WEDNESDAY	THURSDAY	FRIDAY
1	8:30 AM – 9:35 AM	8:30 AM – 9:35 AM	8:30 AM – 9:35 AM	8:30 AM – 9:25 AM	8:30 AM – 9:35 AM
2	9:35 AM – 10:40 AM	9:35 AM – 10:40 AM	9:35 AM – 10:40 AM	9:25 AM – 10:20 AM	9:35 AM – 10:40 AM
RECESS	10:40 AM – 11:00 AM	10:40 AM – 11:00 AM	10:40 AM – 11:00 AM	10:20 AM – 10:40 AM	10:40 AM – 11:00 AM
3	11:00 AM – 12:05 PM	11:00 AM – 12:05 PM	11:00 AM – 12:05 PM	10:40 AM – 11:35 AM	11:00 AM – 12:05 PM
4	12:05 PM – 1:10 PM	12:05 PM – 1:10 PM	12:05 PM – 1:10 PM	11:35 AM – 12:30 PM	12:05 PM – 1:10 PM
LUNCH	1:10 PM – 1:35 PM	1:10 PM – 1:35 PM	1:10 PM – 1:35 PM	12:30 PM – 12:55 PM	1:10 PM – 1:35 PM
5	1:35 PM – 2:40 PM	1:35 PM – 2:40 PM	1:35 PM – 2:40 PM	12:55 PM – 1:50 PM	1:35 PM – 2:40 PM
END OF SCHOOL DAY	2:40 PM	2:40 PM	2:40 PM	1:50 PM EARLY FINISH	2:40 PM

Clubs, Teams and Groups

We offer a number of educational and fun extracurricular school activities. A number of our activities operate during lunch and recess such as Chess Club, Lego Club, and the Poets Society, while others operate after school such as Homework Club and Short Story Factory.

In addition to Physical Education lessons there are also a number of opportunities for your child to participate in inter-school sporting competitions across the year, as well as the Bushranger Cadets program.

Student Leadership Team

Students from Years 7-12 are elected to the Student Leadership Team each year. Year 7 elections occur in June, with Year 8, 9, 10 and School Captain elections occurring in September. Year 11 Leaders carry over to Year 12, but students will vote on their School Captain and Vice Captain from that group.

The Student Leadership Team is the voice of the student body and organises many activities throughout the year in support of various charities.

Our Pathways

Safety Bay Senior High School offers four academic pathways; Foundation, General, ATAR and Industry Links, as well as the following programs;

- **Cheer-Dance Specialist Program**

Our nationally recognised Cheer-Dance Specialist Program is one of only two Department of Education approved Specialist Cheer-Dance Programs. See page 7 for more details.

- **Football Specialist Program**

Safety Bay Senior High School is 1 of only 3 schools in WA to offer a Department of Education Approved Football Sport Specialist Program. See page 8 for more details.

- **Special Music Program**

A program to nurture and develop a student's passion for music. See page 9 for more details.

- **Pathfinder Academic Excellence Program**

The Pathfinder Program is an academic enrichment program that provides students with a learning environment that will both engage and encourage them to explore the curriculum in more detail. See page 10 for more details.

- **Industry Links Program**

A vocational education pathway for students headed for the workplace.

- **UniReady Enabling Program**

An alternate entry pathway run by Curtin University that allows Year 12 students to graduate with an ATAR score of 70 and achieve English competency providing entry in Curtin's minimum-entry courses.

- **THRIVE Program**

A selective pathway that provides specialist support for students with identified literacy and numeracy needs.

In addition to our core subjects of Maths, English, Science, Humanities and Physical Education, we also offer elective units in The Arts, Technologies and Languages.

Learning Areas

We divide our curriculum into eight major Learning Areas. Students in Years 7 to 10 are required to undertake studies in these areas and can make choices to enable them to pursue their particular strengths, talents and interests.

Our core subjects consist of Mathematics, English, Science, and Humanities & Social Sciences.

Mathematics

We aim to develop your child's knowledge and abilities across three main Mathematics strands: Number and Algebra, Measurement and Geometry, and Probability and Statistics.

Mathematics is important for achieving employment, and encourages skills such as logical reasoning, critical thinking, abstract or spatial thinking, and problem-solving.

English

The study of English helps children develop the knowledge and skills needed for education, training and the workplace. English enhances and develops literacy and comprehension skills, improves written communication, enhances students' oral language skills, encourages reading and engages critical thinking.

Humanities & Social Sciences

Humanities and Social Sciences (HASS) is the study of human behaviour and interaction in social, cultural, environmental, economic and political contexts. Humanities and Social Sciences have a historical and contemporary focus, from personal to global contexts. The study of HASS will develop the ability to question, think critically, make decisions based on evidence, devise proposals for actions, and communicate effectively.

Science

The study of Science enables your child to understand physical and biological worlds, from the smallest atom to the expanse of the universe, striving to learn how it all works, and how we can use this knowledge to benefit human kind.

Health & Physical Education

Our Health programs build knowledge and awareness of a range of topics including physical and mental wellbeing, resilience, respectful relationships, anti-bullying and nutrition. The practical Physical Education programs include developing skills and game play in a range of sports, as well as health, fitness and wellbeing based activities.

In Years 9 and 10, students have more options, with elective courses available. In addition to these courses, students can participate in our annual School Athletics Carnival, as well as inter-school sports carnivals and School Sport WA competitions.

The Arts

We aim to engage and inspire young people with meaningful experiences through both the Performing and Visual Arts. Our passionate staff create safe and respectful learning environments for students to develop new ways of engaging creatively as well as expressing themselves through a variety of media, whilst nurturing and extending each individual's skills and talent.

Technologies

Technologies focuses on the development of knowledge and skills and the use of technology and resources. Technologies options include workshops, hospitality, community services, and information technology. These options motivate young people and engage them in a range of learning experiences that are transferable to home, community and the workplace.



Cheer-Dance Specialist Program

Our nationally recognised Cheer-Dance Specialist Program is one of only two Department of Education approved Specialist Cheer-Dance Programs.

Our Cheer-Dance Specialist Program is committed to developing strong and confident young people who strive for excellence and to reach their full potential. Our vision is to help prepare students for their next phase of life beyond school, by setting high standards and expectations.

Training and Facilities

Our Cheer-Dance students participate in Specialist Cheer and a range of Dance styles across the school week. This time does not impact on the learning program of the students.

We also have a high standard of facilities for Dance and Cheerleading including gymnastics flooring, crash mats, mini tramp, sprung dance floor, mirrors, sound system and fitness training area.

We are dedicated to building champion athletes whilst representing our school with enthusiasm and pride in a variety of performances and competitions throughout the year.

Selection Trials

Selection Trials are held annually in Term 2 for current Year 6 students, to gain entry into the program the following year.

Visit:

safetybay.wa.edu.au ➡ **Programs ➡ Cheer-Dance Specialist Program** or **scan the QR code** at the top of the page to find out more information.

*Scan me to visit our website
for more information &
registration links.*



Football Specialist Program

Safety Bay Senior High School is 1 of only 3 schools in WA to offer a Department of Education Approved Football Sport Specialist Program.

The Safety Bay Senior High School Football Specialist Program provides an elite professional coaching environment for the students in the program, allied to a clear, structured pathway towards a career in the game, as well as commitment to creating a learning environment that is both nurturing and challenging.

The Football Specialist Program is committed to providing opportunities for all students to fulfil their potential.

Training and Equipment

Students participate in four hours of practical coaching sessions during the school week. Students also supplement this with practice matches, participation in the Champion Schools Soccer Program, club training and weekend matches.

Our FIFA approved artificial turf facility encourages small sided football and we also have a purpose-built fitness centre for off field development. We provide access to an extensive range of speed, agility and quickness equipment.

Selection Trials

Selection Trials are held annually in Term 2 for current Year 6 students, to gain entry into the program the following year.

Visit:

safetybay.wa.edu.au ➡ **Programs** ➡ **Football Specialist Program** or **scan the QR code** at the top of the page to find out more information.

*Scan me to visit our website
for more information &
registration links.*



Special Music Program

Our Special Music Program nurtures and develops passion for music with a focus on both individual and group music lessons.

If your child has been learning an instrument in Primary School through the Department of Education's Instrumental Music Program, this is the program for them.

We also encourage students who want to begin their musical journey to apply for our Special Music program.

Opportunities

Students commence or continue Instrumental Lessons in Classical Guitar, Flute, Clarinet, Saxophone, Trumpet, Trombone, Euphonium, Tuba or Percussion.

In the classroom, students learn to read and use the language of music. They incorporate technology into the development, recording and performance of their own compositions, arrangements and songs.

Concert Band and the Guitar Ensemble enhance performance and group playing skills.

Auditions

Auditions are held annually in Term 2, for current Year 6 students, to gain entry into the program the following year.

Visit:

safetybay.wa.edu.au ➡ **Programs** ➡ **Special Music Program** or **scan the QR code** at the top of the page to find out more information.

*Scan me to visit our website
for more information &
registration links.*



Pathfinder Academic Excellence Program

Our Pathfinder Academic Excellence Program is designed to challenge students academically, build self-esteem and leadership skills, and prepare students for tertiary education.

The aim of the program is to foster the academic and personal development of students within a caring environment, assisting them to explore and meet their potential.

The Pathfinders Program runs through Maths, English, Science and HASS subjects in Years 7-10.

Being involved in the Pathfinder Program does not preclude a student from involvement in other special programs in the school. Many Pathfinders have a variety of interests and talents and are encouraged to pursue these.

Program Entry

PAT (Progressive Achievement Tests) data is provided by primary schools in the Safety Bay Senior High School catchment area in Term 4 of Year 6.

The top-ranked 32 students from the incoming cohort are selected and offered a position in our Pathfinders Academic Excellence Program for Year 7.

All students take part in PAT testing in Term 4 of Years 7-9, so that students who weren't previously Pathfinders have an opportunity to become one.

Thrive Program

The Thrive Program is an innovative intervention initiative designed to address knowledge or skills gaps in literacy and numeracy among students in Years 7 to 10. Tailored to meet the unique needs of every student, the program employs a research based, targeted approach to enhance essential academic skills, ensuring that students are well equipped for success.

Through a combination of individualised instruction, research based intervention programs in literacy and numeracy, and a modified mainstream curriculum, the Thrive Program aims to provide a safe, supportive, individualised and engaging learning environment and focuses on addressing current gaps in knowledge.

Key components of the Thrive Program include diagnostic assessments to identify specific areas of need, differentiated instruction to cater to individual learning style, and ongoing progress monitoring to track advancements and adjust instructional strategies accordingly. By promoting a positive and collaborative learning atmosphere, the program encourages students to build confidence, resilience, and a lifelong enthusiasm for learning. Research has shown that direct and targeted instruction at the point of need is the most effective means of improving student outcomes.

Targeted learning programs assist students to develop the functional literacy and numeracy skills necessary to contribute to society as an adult. Placement in the Thrive Program is determined based on a broad set of data including: National Assessment Program Literacy and Numeracy (NAPLAN); ACER Progressive Achievement Test (PAT); and Online Student Information (OSI), including behaviour, attendance and wellbeing data.



The number of students in each class in the Thrive Program is capped at 20. A one-teacher model applies to Year 7 and 8 classes, meaning students in these classes will have one teacher for all their MESH and Health classes. In Year 10, students will have the standard four teacher model for their MESH classes. Students in Year 10 will also have access to our Careers Practitioner, and Vocational Education and Pathways Program Coordinator, to complete individual pathway planning and goal setting.

In all classes within the Thrive Program, students will have access to a modified version of the Western Australian Curriculum, the same as their peers. Alongside this curriculum, students will be given intensive literacy and numeracy interventions. It is not intended that students remain on the Thrive program permanently, the aim is to transition back to mainstream classes when ready.

Student Data

Nationally consistent collection of data for School Students with Disability

Our school is part of a national project about students with disability and/or learning difficulties. We provide data about the number and learning needs of children at our school. The name of the school and the name of the students will not be reported. Information about the different types of needs and the programs and resources the school uses to overcome barriers and support children with special educational needs will be collected.

We believe it is important to contribute to this because it will help both Federal and State governments develop better policies that acknowledge the level of resources needed in schools to meet the needs of all students in Western Australia.

If you would like to learn more about the Nationally Consistent Collection of Data for School Students with a Disability you can visit:

www.nccd.edu.au/for-parents-guardians-and-carers

Unique Student Identifier (USI)

The Unique Student Identifier (USI) is an Australia-wide student number which enables students to track their training records across all Australian states and territories.

USI requirements came into effect from the start of 2015. The USI is essential for all Vocational Education and Training (VET) results, as required by the School Curriculum and Standards Authority.

To create a USI you will need to go to:

www.usi.gov.au (or scan the QR code on the right)



Scan to visit the official USI website.

Before going to this website you will need the following information:

- Student name (as written on the identifying documents to be used)
- Student date of birth
- Student country of birth
- Student city of birth

You will also need one of the following identifying documents to create the USI:

- Medicare card
- Australian passport
- Overseas passport (only to be used if you do not have a Medicare card)
- Australian birth certificate



Transitioning from Primary to High School

Communication

Students have a range of specialist teachers throughout the year. In addition to their subject teachers, students may also develop relationships with our Student Services Team.

Compass School Portal

The Compass School Portal is an integrated, online portal that allows you to access up-to-date and meaningful information about our school and your child's progress. Compass includes many different features, including the ability to:

- Monitor your child's attendance, and enter an explanation for absence or lateness
- View regularly posted school notices.
- Communicate with your child's teachers
- View your child's timetable
- View your child's academic results and assessment & course outlines.
- Book Parent/Student/Teacher Conferences
- Provide consent for events

Email

As a school we use email to communicate with parents and guardians on a regular basis, this includes sending school reports via Connect and excursion permission requests through Compass. We encourage all parents and caregivers to ensure the email address we have on record is kept current.

If you have a concern for your child at school, particularly if it is academic or occurring in just one class, then the respective teacher or Head of Learning Area (HoLA) should be your first point of contact.

Please contact the school at (08) 9528 9200 for the correct teacher/HoLA contact details if you are unsure.

If your concern is complex or occurring over a number of classes, please email:

[studentservices.safetybay.shs@
education.wa.edu.au](mailto:studentservices.safetybay.shs@education.wa.edu.au)

with details of the issue, your child's name and year level, and the relevant staff member will contact you.

Student Services

Our Student Services team provides support for the social, emotional and educational wellbeing of all students. The ultimate goal of the Student Services team is to help students reach their full potential. We offer a wide variety of support through a positive pastoral care programs and reward initiatives to recognise student achievement, attendance and Good Standing.

Good Standing

A student's reward points tally will be used, along with their attendance rate to determine if they have Good Standing. Having Good Standing means that a student is able to participate in all excursions, extracurricular activities, incursions, sport carnivals and reward events and it's expected that students maintain their Good Standing at all times. This resets every semester and students are given 10 reward points to start them off.

For more information, please refer to our The Safety Bay Way Information Book:

If viewing digitally, click here ➡ [The Safety Bay Way PDF Guide](#) or scan here ➡



Attendance

Here at Safety Bay Senior High School, we want every student to do their very best and attending school every day has a vitally important role in that. Students that are absent can miss important ideas, concepts, knowledge and skills for future learning. The *School Education Act 1999* legally requires that parents/caregivers ensure their children attend the school in which they are enrolled each day that the school is open unless there is good reason for them not to attend.

Acceptable reasons to not attend school may include:

- Being unwell.
- Attending cultural or religious observances such as sorry time and funerals.
- An unavoidable medical appointment,

Unacceptable reasons to not attend school may include:

- Celebrating a birthday.
- Going on a family holiday.
- Visiting family and friends.
- Sleeping in.
- Looking after other children/siblings.
- Sport or other recreational activities that have not been approved by the school.
- Non-essential appointments (*If possible, routine medical and other health appointments should be made either before or after school or during weekends/holidays*).

The school is required to follow up any unexplained absences. If your child is away please let Student Services know as soon as possible via one of the following methods:

1. (Preferred) Report absence via **Compass**. You may download the Compass application on the Apple or Google Play App Stores for mobile devices. When logged in through the app, please select the correct absent child and click 'Attendance Note' underneath your child's details.
2. **Phone** the school at (08) 9528 9200.
3. **Email** safetybay.shs.attendance@education.wa.edu.au
4. Click the '**Report Absence**' button at the top of the Safety Bay Senior High School **website**.

If you are struggling to get your child to school, please contact the school and ask for help. We have qualified professional staff to help parents/caregivers with these issues.

Uniform Guidelines

The Safety Bay Senior High School Student Dress Code is to have a consistent school uniform among students of each year group, leading all the way through Senior School.

The school community has endorsed the implementation of the Student Dress Code as a visible representation of the standards expected of students, playing an important role in promoting a positive image of the school. By enrolling your child at Safety Bay Senior High School, you are making a commitment to support the Student Dress Code.

This code also creates a sense of identity and pride among students and the wider school community, and helps students learn the importance of appropriate presentation. The Student Dress Code operates in connection with the Good Standing Policy and The Safety Bay Way.

The current uniform guidelines are shown on the next page. Our uniforms are supplied by an external provider, Tudor Uniforms, who provide excellent products and service.

The uniform shop is located within the school, next to the Canteen. You can view and try on to ensure correct sizing. The on-site uniform shop is open on Wednesdays and Fridays, from 7.30am – 9.30am. Additional opening days will be available leading up to the commencement of Term 1 each year. These will be advertised through the school's communication channels.

You may also purchase online uniform orders through the Tudor website (QR code and link below).

Where families are experiencing financial hardship, please make contact with the school.

Uniform shop opening hours:

Wednesday & Friday | 7:30am – 9:30am



Scan this QR code or click the link underneath (if viewing this digitally) to **order uniform items online.**



Tudor School Uniforms
Website

Scan this QR code or click the link underneath (if viewing this digitally) to view the **Uniform Catalogue PDF** for item prices.



Uniform Catalogue PDF

Uniform Guidelines

SBSHS Branded Items:

- Polo shirt.
- Specialist program polo shirt.
- Physical education shirt.
- Shorts.
- Track-pants.
- Skort.
- Dress.
- Jacket.
- Winter fleece top.
- Enclosed footwear.



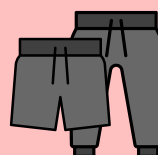
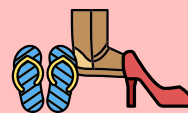
Other Acceptable Items:

- White or navy blue long-sleeved undershirt worn under school polo.
- Plain navy blue pants without logo or with a *small* non-SBSHS logo.
- Navy blue or black leggings/tights worn under approved shorts or pants.
- Hats/caps - no offensive wording or inappropriate images.



Unacceptable Items:

- Hoodies.
- Jumpers without the SBSHS logo.
- Jackets without the SBSHS logo.
- Leggings that are *not underneath* shorts.
- Denim of any kind.
- Ugg boots, thongs, slides, sandals, high heels.
- Non-blue pants or shorts.
- Undershirts that are not white or navy blue.



Students are not permitted in class unless wearing the correct uniform.

Students wearing removable non-uniform items (jackets, hoodies, etc.) will be asked to take them off during the school day.

Loan uniform items are available from Student Services for students who require them and are to be returned at the end of the day.

Assistance is available if you are experiencing financial hardship. Contact our accounts office to discuss your options.

Positive Peer Relationships

Safety Bay Senior High School does not tolerate bullying of any type.

Safety Bay Senior High School defines bullying as an ongoing and deliberate misuse of power in relationships through repeated verbal, physical and/or social behaviour that intends to cause physical, social and/or psychological harm. Bullying can involve an individual or a group misusing their power, or perceived power, over one or more persons who feel unable to stop it from happening.

Our school is committed to each person respecting each other and allowing for individuality where everyone (students, staff and parents) uses positive and respectful language and accepts difference.

Our School Community has developed two resources, the first a **Positive Peer Relationships Strategy** as a proactive whole-school approach to promote a positive school climate, encourage positive peer relationships and tackle bullying.

The second is **Together Together: A Guide To Getting Along**, a student resource distributed in all Year 7-9 Health classes. The guide is filled with activities, links to videos, and lessons about relationships, bullying, cyber security and more, compiled from information written by leading school psychologists and teaching staff. The results of a school community survey and targeted consultations in 2022-23 provided useful directions for this strategy.

Safety Bay Senior High School's response to bullying is designed to support the bullied students, to educate the student who is bullying, and resolve any conflict.

Bullying can occur in all aspects of life and incidents of bullying often increase in early high school years.

This is a time of great change for students. Every student in the school has the right to feel safe and to be treated with respect. Everyone in the community has the responsibility to prevent bullying.

Cyber-bullying is bullying through the use of internet services such as email, chat rooms, instant messaging, social media and mobile phone technologies such as text messages.

Cyber-bullying often occurs outside the school, however, it can impact on school life. Whilst our school may address cyber-bullying through educational programs, parents/caregivers are advised to monitor their child's online interactions.

Parents/caregivers can help by talking to their children, keeping the school informed of any concerns, and making reports to the eSafety Commissioner. Below is a link and QR code that will take you to the eSafety Commissioner's website where you can find out more or instantly report any online abuse. Under Australian law, eSafety can issue a takedown notice to an online platform or service to remove the worst type of harmful online material, or block access to protect Australian users from viewing this content.



eSafety Commissioner Website:

<https://www.esafety.gov.au/>

Technology in School

Providing students with access to modern technology for the purpose of enhancing their learning and preparing them for the technological world is a priority at Safety Bay Senior High School.

Students with access to a computer and internet at home can **download Office 365 for free** on their home devices once they have an active Department of Education email and student login.

Mobile Phone Policy

The Safety Bay Senior High School Mobile Phone Policy is in line with Department of Education Policy.

Students must have mobile phones turned **Off and Away All Day** during school hours, including recess and lunch.

If a student accesses a mobile phone during any part of the school day, the device will be confiscated.

Students are permitted to collect their device from Student Services at the end of the school day for first offence confiscations. Third and subsequent offences, require the parent/caregiver to collect the device.

If your child has a medical condition that requires a mobile phone (eg. diabetes), please ensure that Student Services is notified. This ensures appropriate planning is put in place to support your child.

Digital Release Permissions

Your permission is sought for the school to publish video and photographic content of your child and/or samples of your child's work to be used by the school and the Department of Education.

Your child's image and/or work may be published as promotion of student achievements, the school and its events. This includes hardcopy, digital, audio and video file formats. Placement Includes but is not limited to, placement in school newsletters, email, school and Department of Education intranet and internet sites including social media websites and third party applications, which may enable viewers/readers to identify your child.

If you agree to this use of your child's image and school work, please tick and sign the permissions on the Student Enrolment Form. Once signed, the consent will remain effective until such time as you advise the school otherwise in writing.

If you do not give your permission for your child's image to be published, please discuss this with your child.



Student Online Services Account

Safety Bay Senior High School provides access to Department of Education online services. These enhance the contemporary learning opportunities available to students and the range of teaching tools available to staff to deliver the Western Australian Curriculum.

The school seeks approval for your child to be given access to these online services.

The Department's online services currently provide students with access to:

- individual email and calendar accounts.
- the Internet (monitored and controlled student access to websites).
- online teaching and learning services such as Compass and digital resources.
- online file storage and sharing services.

If you agree to your child using these online services, please tick and sign the permissions on the Student Enrolment Form.

Please note that while every reasonable effort is made by Safety Bay Senior High School and the Department of Education to prevent student exposure to inappropriate content when using online services, it is not possible to completely eliminate the risk of such exposure.

You should be aware that the Department of Education has the right to review, audit, intercept, access and disclose messages created, received or sent over Department online services. Logs of email transactions and internet access data are kept for administrative, legal and security purposes and may be monitored. Similar to other corporate records, emails and internet access records are discoverable in the event of legal action and are subject to provisions of the Freedom of Information Act 1992 (www.foi.wa.gov.au).

You should also be aware that general internet browsing not conducted via the Department of Education's network is not monitored or filtered by the Department. The Department encourages close family supervision of all internet use by children in locations other than the school, and strongly recommends the use of appropriate internet filtering software.

Advice on managing internet use at home can be found on the Office of the E-Safety Commissioner website.

www.esafety.gov.au/iparent



Third Party Service Providers



Online educational resources are cloud based storage used by teachers across Western Australia to improve student learning outcomes.

Our staff make decisions about the best technology to meet the needs of our students.

With your consent, Safety Bay Senior High School wishes to utilise third party application provider/s to support students' learning.

Your consent will be sought for known applications that are used by students. Consent for third party providers must be given annually as year-to-year these may change as new programs, courses and softwares are developed and introduced.

As part of the sign-up process, these providers may require personal information to be disclosed to them.

Personal information that may be disclosed about your child includes:

- Student name
- Gender
- Age or date of birth
- Year group
- Class teacher
- Student email

For all school recommended databases students are required to use their Education Department email address only.

If you have any questions about the storage of your child's information, please contact Administration.

School Carparks

Carparks at the school are not to be used to pick up or drop off students. Please follow the signage upon entrance of the school to ensure flow of traffic. You may also drop off students at the rear of the school, on Georgetown Drive. Please do not enter the staff carpark to drop off or pick up students.

Senior School students driving their own vehicle to school are permitted to park **ONLY** in the parking provided for public use, or on Georgetown Drive. Please do not park in bays that are labelled for disability access – unless you are able to present an ACROD Parking Permit – or bays that are labelled for visitors.

Scooters and Bikes

A bike rack is provided for storing student bikes and scooters. All bikes and scooters must be stored *inside the bike compound* before school and retrieved at the end of the day. The bike compound will be locked by staff shortly after the beginning of the school day and will remain locked until the end of the day.

Students must provide their own lock and chain to secure their bike or scooter. **The school takes no responsibility for stolen or lost items.**

Students must wear a helmet. Staff will encourage students to be *bike safe*, however it is the responsibility of parents/caregivers and students to ensure their safety.

eScooters

Students **over the age of 16** are permitted to ride eScooters to Safety Bay Senior High School. The current laws states:

- One person per e-rideable.
- Approved helmets must be worn at all times.
- Riders must be over the age of 16.
- Riders must obey 10kph speed limit on footpaths, or 25kph on bike paths, shared paths and local roads.

Safety Bay Senior High School takes no responsibility for the safe keeping of e-scooters and they must be stored with bikes and scooters in the bike racks.

Transperth/SmartRiders

A SmartRider card is a reusable smart card which allows easy travel on Transperth services. The card enables students to **travel for free** on any trip on Monday to Friday until the end of the school year and concession fares at all other times.

SmartRiders are organised through Administration upon commencement. The initial card is provided free. Replacement cards can be ordered through the school's front office. Cards come with a zero dollar balance and will need to have value added to the card before travel. Go to www.transperth.wa.gov.au to find out how.

Plan Your Journey

School services change prior to the start of each school year. We recommend waiting until two weeks before the start of school term before planning your journey. You can plan a journey by:

- visiting transperth.wa.gov.au
- downloading the Transperth app
- calling the Info Line on 13 62 13

Additional Information

Insurance

Personal Accident Insurance

The Department of Education does not provide personal accident insurance for students while they are at school. Ambulance fees are not covered for students. Parents/Caregivers may obtain personal accident insurance for their child from a private insurer of their choice.

Personal Property

The Department of Education does not have cover for the accidental loss or damage of the personal property of students. Similarly, there is no insurance cover for student property that is stolen.

School Canteen

Our school canteen, The Bay Snack Shack, is an independent business. Their menu can be found on our school website or via the QR code & link at the bottom of the page, and caters for dietary restrictions, with specific items on the menu labelled GF (Gluten Free) and V (vegetarian).

Students can make orders in person before 9am or pre-order online at quickliq.com.au.

Personal Items List

Students are required to bring stationery and other personal items to school each day to enable them to interact in classes.

Booklists will be provided to parents/caregivers prior to the commencement of Term 1 each year, and can also be found on our school website.

You are able to source these items from any supplier, however, if a brand is specified, please consider purchasing the particular item due to the brand's quality and ability to complete the task.

Keep Up to Date

Our **Social Media** pages are updated regularly with the current happenings at our school.

Follow us on Instagram:

- @safetybayshs

Follow us on Facebook:

- Safety Bay Senior High School
- Safety Bay SHS Specialist Football Program
- Safety Bay SHS Cheer-Dance Specialist Program

Click on the link below (if viewing digitally) or scan the QR code for our Canteen menu.

The Bay Snack Shack Menu



Contributions and Charges

Secondary Assistance Scheme

Holders of one of the following cards may be eligible to receive financial assistance to help pay Contributions and Charges:

- Centrelink Health Care Card
- Pensioner Concession Card
- Veterans Affairs Concession Card

Application forms are available from our Accounts Department. Students or Parents/Caregivers need to provide proof of eligibility.

Applications must be completed in Term 1 each school year.

Centrepay

Centrepay can be offered free of charge to parents/guardians who receive regular payments from Centrelink. A Centrepay Account allows you to make regular payments over the duration of the school year. Please contact our Accounts Department for further information.

Saver Plus

You may be eligible if you have a Health Care or Pensioner Concession Card, are at least 18 years old, have regular income from work, and have a child at school or study yourself.

Find out more by visiting www.bsl.org.au/services/saving-and-managing-money/saver-plus/ or contact your local Saver Plus worker on **9265 5585**.

Wanslea Grandcarers Scheme

The Wanslea Grandcarers Support Scheme is an annual payment to grandparents who have the full-time care of their grandchildren. Call **1800 794 909** between 10am and 4pm Monday to Friday for more information.

Payment Options

- **At Administration Office**

Cash / Cheque / Credit Card / EFTPOS

- **Direct Deposit**

ACCOUNT: Safety Bay Senior High School

BSB: 066 040

ACCOUNT NO: 19906686

REFERENCE: Student name and purpose of deposit

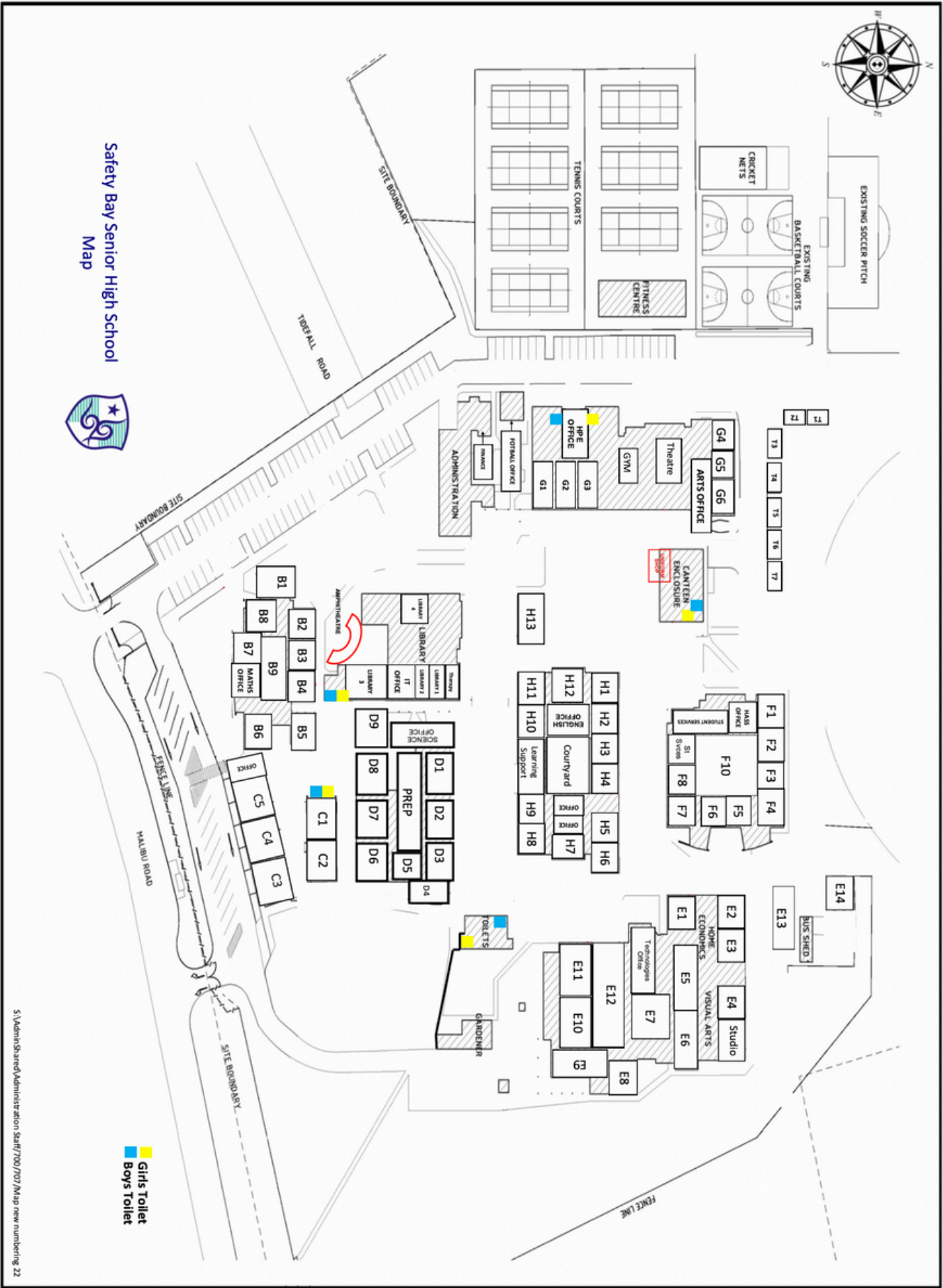
- **BPoint**

www.bpoint.com.au/bw/payments/SAFETYBAYSENIORHIGHSCHOOL

REFERENCE: Student name and purpose of deposit

Payment plans are available by calling 9528 9209.

School Map



S:\Admin\Shared\Administration Staff\700\707 Map new numbering 22



Safety Bay Senior High School

80 Malibu Road
Safety Bay, WA, 6169

Postal Address

PO Box 83, Rockingham WA, 6968

Phone

08 9528 9200

Email

safetybay.shs@education.wa.edu.au

Administration Hours

7.30am – 4.00pm

Monday, Tuesday, Wednesday, Friday (during school term)

7.30am – 3.30pm

Thursday (during school term)