



SAFETY BAY SENIOR HIGH SCHOOL

imagine believe achieve

Enrolment Information





Artwork by
Safety Bay Senior High School student,
Kyra Ugle

Contents

- 01** Principal's Welcome
- 02** School Board Welcome
- 03** Imagine, Believe, Achieve
- 04** About Safety Bay Senior High School
- 05** Learning
- 07** Specialist Cheer-Dance Program
- 08** Specialist Football Program
- 09** Special Music Program
- 10** Pathfinder Academic Excellence Program
- 11** Student Data
- 12** Transitioning from Primary to High School
- 13** Student Services
- 15** Positive Peer Relationships
- 16** Technologies in School
- 17** Online Usage
- 18** Acceptable Use Agreement
- 19** Third Party Service Providers
- 20** Transport
- 21** Student Dress Code
- 23** Additional Information
- 24** Contributions and Charges



Principal's Welcome

Getting your child's education right is fundamental to how we do things at Safety Bay Senior High School. With the move to high school, we also appreciate how vital it is that children and their parents receive the support, care and attention needed to make this critical transition successful. It's for this reason, we place a high value on fostering close communication with students and their parents.

As part of our commitment to giving your child the best education possible, we challenge all students to achieve their full potential. We have a proud history of producing successful graduates who contribute to the community on a local, national and global scale. Our graduates continue to achieve success, from the political arena, to the sporting field and even the stage, it's The Safety Bay Way.

As a school, we collaborate with many partners in the educational and business sector to provide quality teaching and learning opportunities for our students.

We look forward to welcoming your child to Safety Bay Senior High School.

Alen Kursar
Principal



School Board Welcome

I extend a warm welcome to all new students and their families.

The School Board, in conjunction with the Principal, ensures the school fulfils its educational responsibilities, oversees the strategic direction of the school and provides input into initiatives to improve outcomes for students.

Our School Board comprises staff, parents and community members with a diversity of expertise in vastly different knowledge and skills-areas, each of which provides unique opportunities and viewpoints. The School Board looks forward to supporting the school in continuing its long and proud history of providing for a wide variety of students in the local community.

Make sure you check our school website, Facebook page, Connect and Compass to stay informed, and for ways you can contribute and be involved in our Safety Bay Senior High School community.

On behalf of the School Board, we look forward to a successful partnership with you, to support The Safety Bay Way.

Kylie Shailer
Chairperson



Safety Bay Senior High School is an Independent Public School offering students quality public education that will open the door to future opportunities, whether in the workplace or further education and training.

Established in 1978, we have been part of the Safety Bay community for over forty years and now cater for over 1200 students ranging from Year 7 to Year 12. We have a proud history of producing successful graduates who contribute to the community on a local, national, and global scale.

Commitment to Culture

Safety Bay Senior High School is proud of our First Nations people and their role in educating each and every one of us. This is an area we all strive to keep learning about and we encourage all to share their knowledge and be part of our development, educationally and culturally.

The Safety Bay Senior High School Cultural Centre offers a place where students can be themselves, in a safe and caring environment. The school takes pride in encouraging First Nations students and their parents to become involved in daily schooling activities.

Our cultural centre runs a Moorditj Djoowak Program, where guest speakers and students relate to culture.

In addition to the excellent resource available to students, Safety Bay Senior High School is dedicated to promoting individual goals and personal bests. Our First Nations students in Years 10–12 have access to the Delang Koondam Program, giving them access to free tutoring in Maths, HASS, English and Science, with exceptional staff to help. The program works in collaboration with the Follow the Dream Tutorial Program, coordinated by David Smith and Dean Gurr from Gilmore College, funded by the Polly Farmer Foundation.

Ngany kaadadjiny Noongar birdiya maaman, yoka, koolangka koora koora yeyi djoowak. Nidja Noongar boodja-k ngany nyin.

I acknowledge and pay respect to the Noongar Elders, men, women, and children past, present and future. This is Noongar country I sit upon.

At Safety Bay Senior High School, our vision is to enhance the opportunities available to our school community and to provide meaningful future pathways of success. We believe everyone has the right to access learning, behaviour, and mental health & wellbeing support needed to thrive and contribute in school, at home, in the community and throughout life.

Safety Bay Senior High School prides itself on diversity, care and respect everyday... it's The Safety Bay Way!



About Safety Bay Senior High School

The Safety Bay Way

The Safety Bay Way is our whole school behaviour framework. It consists of five 'Ways', with students accumulating points for demonstrating the attitudes, behaviours and virtues associated with each. Our Good Standing Policy sits under The Safety Bay Way framework and ensures we have the very highest expectations of, and for, our students.

The Safety Bay Way is promoted across the school and forms a part of every lesson and activity. Students are encouraged to earn reward points. These reward points are then combined with attendance rates to provide an overall ranking and determine each student's Good Standing.

Students earn 2 points for each reward entry, but also lose 2 points for each demerit recorded. Students are rewarded for their Good Standing in Weeks 3, 6 and 10 at year group meetings and assemblies.

Each term, in Weeks 3, 6 and 8, Student Services Coordinators publish a Good Standing list which is displayed on the notice boards around the school.



School Timetable

Period	Time
1	8.30 am - 9.32 am
2	9.32 am - 10.34 am
Recess	10.34 am - 10.59 am
Form	10.59 am - 11.09am
3	11.09 am - 12.11 pm
4	12.11 pm - 1.13 pm
Lunch	1.13 pm - 1.38 pm
5	1.38 pm - 2.40 pm
School Finish	2.40 pm

Clubs, Teams and Groups

We offer a number of educational and fun extracurricular school activities. A number of our activities operate during lunch and recess such as Chess Club and Lego Club, while others operate after school such as Homework Club and Short Story Factory.

In addition to Physical Education lessons there are also a number of opportunities for your child to participate in inter-school sporting competitions across the year, as well as the Bushranger Cadets program.

Student Leadership Team

Students from Years 7-12 are elected to the Student Leadership Team each year.

The Student Leadership Team is the voice of the student body and organises many activities throughout the year in support of various charities.

Our Pathways

Safety Bay Senior High School offers three academic pathways:

Academic Excellence Pathway

The Pathfinder Program is an academic enrichment program that provides students with a learning environment that will both engage and encourage them to explore the curriculum in more detail.

Mainstream Pathway

An aspirational pathway for students who want to keep their options open.

Intervention Pathway

A selective pathway that provides specialist support for students with identified literacy and numeracy needs.

In addition to our core subjects of Maths, English, Science, Humanities and Physical Education, we also offer elective units in The Arts, Technologies and Languages.

Learning Areas

We divide our curriculum into eight major Learning Areas. Students in Years 7 to 10 are required to undertake studies in these areas and can make choices to enable them to pursue their particular strengths, talents and interests.

Our core subjects consist of Mathematics, English, Science, and Humanities & Social Sciences.

Mathematics

We aim to develop your child's knowledge and abilities across three main Mathematics strands: Number and Algebra, Measurement and Geometry, and Probability and Statistics.

Mathematics is important for achieving employment, and encourages skills such as logical reasoning, critical thinking, abstract or spatial thinking, and problem-solving.

English

The study of English helps children develop the knowledge and skills needed for education, training and the workplace.

English enhances and develops literacy and comprehension skills, improves written communication, enhances students' oral language skills, encourages reading and engages critical thinking.

Humanities & Social Sciences

Humanities and Social Sciences (HASS) is the study of human behaviour and interaction in social, cultural, environmental, economic and political contexts. Humanities and Social Sciences have a historical and contemporary focus, from personal to global contexts.

The study of HASS will develop the ability to question, think critically, make decisions based on evidence, devise proposals for actions, and communicate effectively.

Science

The study of Science enables your child to understand physical and biological worlds, from the smallest atom to the expanse of the universe, striving to learn how it all works, and how we can use this knowledge to benefit human kind.

Health & Physical Education

Our Health programs build knowledge and awareness of a range of topics including physical and mental wellbeing, resilience, respectful relationships, anti-bullying and nutrition.

The practical Physical Education programs include developing skills and game play in a range of sports, as well as health, fitness and wellbeing based activities.

In Years 9 and 10, students have more options, with elective courses available. In addition to these courses, students can participate in our annual School Athletics Carnival, as well as inter-school sports carnivals and School Sport WA competitions.

The Arts

We aim to engage and inspire young people with meaningful experiences through both the Performing and Visual Arts.

Our passionate staff create safe and respectful learning environments for students to develop new ways of engaging creatively as well as expressing themselves through a variety of media, whilst nurturing and extending each individual's skills and talent.

Languages

Learning a language has tremendous benefits for school and in life. Students will study their chosen language on everyday topics and learn about daily life, customs and traditions in the target country.

The study of either German or Indonesian is compulsory for students in Years 7 and 8.

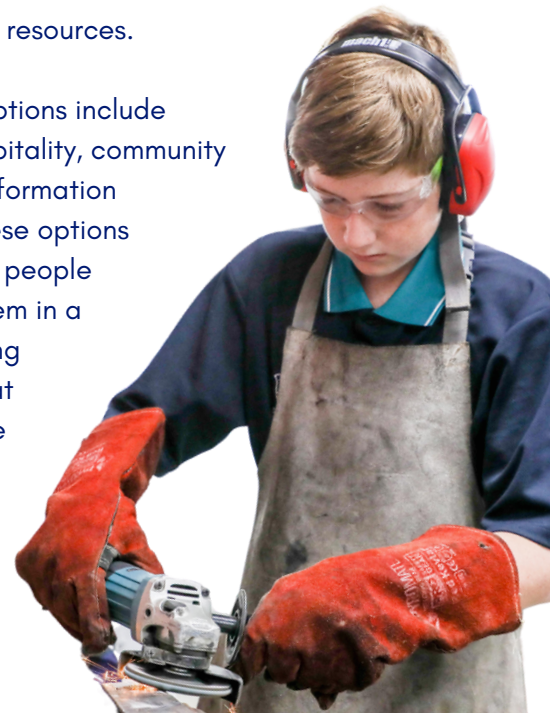
German is the foremost language in Europe and there are many similarities between it and English. Germany also has strong trade and business links for job opportunities for Australians.

Indonesia is our closest overseas neighbour. Learning Indonesian language can lead to more effective communication. Indonesia also has close trade links and business opportunities for Western Australians.

Technologies

Technologies focuses on the development of knowledge and skills and the use of technology and resources.

Technologies options include workshops, hospitality, community services, and information technology. These options motivate young people and engage them in a range of learning experiences that are transferable to home, community and the workplace.



Specialist Cheer-Dance Program

Our nationally recognised Specialist Cheer-Dance Program is one of only two Department of Education approved Specialist Cheer-Dance Programs.

Our Cheer-Dance Specialist Program is committed to developing strong and confident young people who strive for excellence and to reach their full potential. Our vision is to help prepare students for their next phase of life beyond school, by setting high standards and expectations.

Training and Facilities

Our Cheer-Dance students participate in Specialist Cheer and a range of Dance styles across the school week. This time does not impact on the learning program of the students.

We also have a high standard of facilities for Dance and Cheerleading including gymnastics flooring, crash mats, mini tramp, sprung dance floor, mirrors, sound system and fitness training area.

We are dedicated to building champion athletes whilst representing our school with enthusiasm and pride in a variety of performances and competitions throughout the year.

Selection Trials

Selection Trials are held annually in Term 2 for current Year 6 students, to gain entry into the program the following year.

Visit safetybay.wa.edu.au/programs/special-programs/cheer-dance-specialist-program to find out more and register online.



Specialist Football Program

The Safety Bay Senior High School Specialist Football Program is one of only four Perth Glory Football Club Academies in Australia.

The Perth Glory Football Club Academy provides an elite professional coaching environment for the students in the program, allied to a clear, structured pathway towards a career in the game, as well as commitment to creating a learning environment that is both nurturing and challenging.

The Specialist Football Program is committed to providing opportunities for all students to fulfil their potential.

Training and Equipment

Students participate in four hours of practical coaching sessions during the school week. Students also supplement this with practice matches, participation in the Champion Schools Soccer Program, club training and weekend matches.

Our FIFA approved artificial turf facility encourages small sided football and we also have a purpose-built fitness centre for off field development. We provide access to an extensive range of speed, agility and quickness equipment.

Selection Trials

Selection Trials are held annually in Term 2 for current Year 6 students, to gain entry into the program the following year.

Visit safetybay.wa.edu.au/programs/special-programs/specialist-football-program to find out more and register online.



Special Music Program

Our Special Music Program nurtures and develops passion for music with a focus on both individual and group music lessons.

If your child has been learning an instrument in Primary School through the Department of Education's Instrumental Music Program, this is the program for them.

We also encourage students who want to begin their musical journey to apply for our Special Music program.

Opportunities

Students commence or continue Instrumental Lessons in Classical Guitar, Flute, Clarinet, Saxophone, Trumpet, Trombone, Euphonium, Tuba or Percussion.

In the classroom, students learn to read and use the language of music. They incorporate technology into the development, recording and performance of their own compositions, arrangements and songs.

Concert Band and the Guitar Ensemble enhance performance and group playing skills.

Auditions

Auditions are held annually in Term 2, for current Year 6 students, to gain entry into the program the following year.

Visit safetybay.wa.edu.au/programs/special-programs/special-music-program to find out more and register online.



Pathfinder Academic Excellence Program

Our Pathfinder Academic Excellence Program is designed to challenge students academically, build self-esteem and leadership skills, and prepare students for tertiary education.

The aim of the program is to foster the academic and personal development of students within a caring environment, assisting them to explore and meet their potential.

Students from Years 7-10 are placed in a class with like-minded peers for all core subjects.

Being involved in the Pathfinder Program does not preclude a student from involvement in other special programs in the school. Many Pathfinders have a variety of interests and talents and are encouraged to pursue these.

Entry Testing

Entry Testing is held annually in Term 2 for current Year 6 students, to gain entry into the program the following year.

Visit safetybay.wa.edu.au/programs/special-programs/pathfinders-academic-excellence to find out more and register online.

Nationally consistent collection of data for School Students with Disability

Our school is part of a national project about students with disability and/or learning difficulties. We provide data about the number and learning needs of children at our school. The name of the school and the name of the students will not be reported. Information about the different types of needs and the programs and resources the school uses to overcome barriers and support children with special educational needs will be collected.

We believe it is important to contribute to this because it will help both Federal and State governments develop better policies that acknowledge the level of resources needed in schools to meet the needs of all students in Western Australia.

If you would like to learn more about the Nationally Consistent Collection of Data for School Students with a disability you can visit:

www.nccd.edu.au/for-parents-guardians-and-carers



Unique Student Identifier (USI)

The Unique Student Identifier (USI) is an Australia-wide student number which enables students to track their training records across all Australian states and territories.

USI requirements came into effect from the start of 2015. The USI is essential for all Vocational Education and Training (VET) results, as required by the School Curriculum and Standards Authority.

To create a USI you will need to go to:

www.usi.gov.au

Before going to this website you will need the following information:

- Student name (as written on the identifying documents to be used)
- Student date of birth
- Student country of birth
- Student city of birth

You will also need one of the following identifying documents to create the USI:

- Medicare card
- Australian passport
- Overseas passport (only to be used if you do not have a Medicare card)
- Australian birth certificate

Transitioning from Primary to High School

Communication

Students have a range of specialist teachers throughout the year. In addition to their subject teachers, students may also develop relationships with our Student Services Team.

If you have a concern for your child at school, particularly if it is academic or occurring in just one class, then the respective teacher or Head of Learning Area (HoLA) should be your first point of contact.

If your concern is complex or occurring over a number of classes, then the relevant Student Services Coordinator should be contacted.
(see page 13 - Student Services).

Compass School Portal

The Compass School Portal is an integrated, online portal that allows you to access up-to-date and meaningful information about our school and your child's progress. Compass includes many different features, including the ability to:

- Monitor your child's attendance, and enter an explanation for absence or lateness
- Communicate with your child's teachers
- View your child's timetable
- Book Parent/Student/Teacher Conferences
- Provide consent for events

Connect

Connect allows parents to log in and view their child's academic results and course outlines. Assessment outlines, lesson outlines and school notices are posted regularly.

Email

As a school we use email to communicate with parents and guardians on a regular basis, this includes sending school reports via Connect and excursion permission requests through Compass. We encourage all parents and caregivers to ensure the email address we have on record is kept current.

BASEL Model

Our Student Services team provides support for the social, emotional and educational wellbeing of all students. The ultimate goal of the Student Services team is to help students reach their full potential. We offer a wide variety of support through a positive pastoral care programs and reward initiatives to recognise student achievement, attendance and Good Standing.

Our Student Services department is structured using the BASEL model. This model assigns staff to a specific area of the model to ensure a wraparound service, attending to our students Behaviour, Attendance, Social-Emotional and Learning needs.

Please see our BASEL Model contact list in the table on page 14.

Good Standing

A student's reward points tally will be used, along with their attendance rate to determine if they have Good Standing. Having Good Standing means that a student is able to participate in all excursions, extracurricular activities, incursions, sport carnivals and reward events and it's expected that students maintain their Good Standing at all times. This resets every semester and students are given 10 reward points to start them off.

For more information, please refer to our The Safety Bay Way Information Book:

safetybay.wa.edu.au/wp-content/uploads/2023/02/SB-Way-Good-Standing.pdf

Attendance

We want to make sure all children get the best education possible which is why attending school every day is so important. Western Australian law stipulates that all school-aged children must be enrolled and attend school every day.

The school is required to follow up any unexplained absences. If your child is away please let Student Services know as soon as possible via:

SMS: 0407 472 038

PHONE: Call 9528 9200 then select option 1

EMAIL:

safetybay.shs.attendance@education.wa.edu.au

Attendance Matters, Make Every Day Count!

For further information, please refer to our Attendance Matters Information Book:

safetybay.wa.edu.au/wp-content/uploads/2023/02/Attendance-Matters.pdf



Student Services

Head of Student Services

TEAM MEMBERS

<p>B BEHAVIOUR & ENGAGEMENT</p>	<ul style="list-style-type: none"> • Behaviour and engagement improvement meetings; • Whole School Student Behaviour Agreements; • Transitional timetables due to behaviour and engagement; • Liaison with and referral to School Psychologist; • Small group programs targeting behaviour and engagement; • Daily classroom visits (determine schedule); • Students refusing Buddy class; • Good Standing management and implementation; • Student Dress Code. 	<p>Student Services Coordinator 7 & 8</p> <p>Student Services Coordinator 9 & 10</p> <p>Student Services Coordinator 11 & 12</p>	<p>Student Support Coordinator 7 & 8</p> <p>Student Support Coordinator 7 & 8</p> <p>Student Support Coordinator 9 & 10</p>
<p>A ATTENDANCE</p>	<ul style="list-style-type: none"> • Students who are late to class or truanting; • School refusal; • Referral to options other than mainstream schooling (ALTA-1, SMYL); • Implementation and management of transitional timetables; • Attendance Improvement Meetings; • Management of Individual Attendance Plans; • Issuing and management of Individual Attendance Agreements. 	<p>Student Support Coordinator 7 - 9</p> <p>Student Support Coordinator 10 - 12</p>	
<p>S SOCIAL-EMOTIONAL</p>	<ul style="list-style-type: none"> • Management of RMP's (issuing, review); • Suicide Risk Assessments and associated actions/follow up; • Referral of social/emotional issues from Triage Officer; • Students not wanting to go to class (unable to emotionally regulate, anxious, depressed etc); • Small group support/intervention programs for students; • First point of contact for outside agencies (CPFS, Headspace, WAPOL); • Management of social/emotional programs in the school (e.g Cypress); • Management of Parachute Passes (issuing, removal etc). 	<p>Student Support Coordinator 7 & 10</p> <p>Student Support Coordinator 8 & 11</p> <p>Student Support Coordinator 9 & 12</p>	<p>School Psychologists</p> <p>Chaplain</p> <p>Triage Officer</p>
<p>L LEARNING</p>	<ul style="list-style-type: none"> • Student Diagnostic Testing & Reports; • Family engagement and support: NDIS, Centrelink; • Disability & Medical data collection & entry; • Intervention class management; • Health care follow-up - imputed diagnosis; • Support healthcare planning and review; • Apply for NAPLAN, OLNA, EST's and ATAR assessment adjustments; 	<p>Head of Learning Support</p> <p>Lead Education Assistant</p>	<p>Aboriginal and Islander Education Officer</p>

Positive Peer Relationships

Safety Bay Senior High School does not tolerate bullying of any type.

Safety Bay Senior High School defines bullying as an ongoing and deliberate misuse of power in relationships through repeated verbal, physical and/or social behaviour that intends to cause physical, social and/or psychological harm. Bullying can involve an individual or a group misusing their power, or perceived power, over one or more persons who feel unable to stop it from happening.

Our school is committed to each person respecting each other and allowing for individuality where everyone (students, staff and parents) uses positive and respectful language and accepts difference.

Our School Community has developed a **Positive Peer Relationships Strategy** as a proactive whole-school approach to promote a positive school climate, encourage positive peer relationships and tackle bullying. The results of a school community survey and targeted consultations in 2022-3 provided useful directions for this strategy.

You can access it here: safetybay.wa.edu.au/wp-content/uploads/2023/03/Positive-Peer-Relations-Strategy-5.pdf

Safety Bay Senior High School's response to bullying is designed to support the bullied students, to educate the student who is bullying, and resolve any conflict.

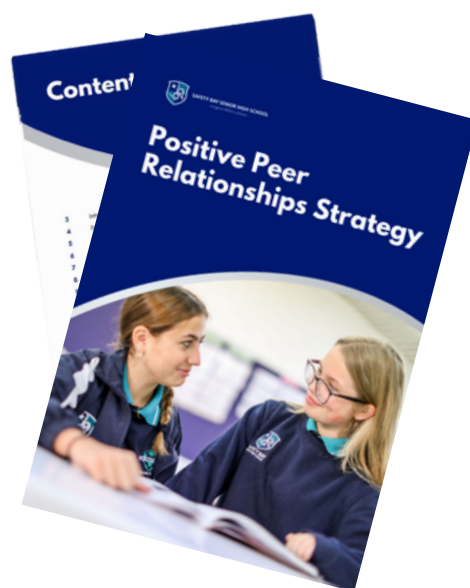
Bullying can occur in all aspects of life and incidents of bullying often increase in early high school years.

This is a time of great change for students. Every student in the school has the right to feel safe and to be treated with respect. Everyone in the community has the responsibility to prevent bullying.

Cyber-bullying is bullying through the use of internet services such as email, chat rooms, instant messaging, social media and mobile phone technologies such as text messages.

Cyber-bullying often occurs outside the school, however, it can impact on school life. Whilst our school may address cyber-bullying through educational programs, parents/caregivers are advised to monitor their child's online interactions.

Parents/Caregivers can help by talking to their children, keeping the school informed of any concerns, and making reports to the eSafety Commissioner.



Technology in School

Providing students with access to modern technology for the purpose of enhancing their learning and preparing them for the technological world is a priority at Safety Bay Senior High School.

Students with access to a computer and internet at home can **download Office 365 for free** on their home devices once they have an active Department of Education email and student login.

Mobile Phone Policy

The Safety Bay Senior High School Mobile Phone Policy is in line with Department of Education Policy.

Students must have mobile phones turned **Off and Away All Day** during school hours, including recess and lunch.

If a student accesses a mobile phone during any part of the school day, the device will be confiscated.

Students are permitted to collect their device from Student Services at the end of the school day for first offence confiscations. Second and subsequent offences, require the parent/caregiver to collect the device.

If your child has a medical condition that requires a mobile phone (eg. diabetes), please ensure that Student Services is notified. This ensures appropriate planning is put in place to support your child.

Digital Release Permissions

Your permission is sought for the school to publish video and photographic content of your child and/or samples of your child's work to be used by the school and the Department of Education.

Your child's image and/or work may be published as promotion of student achievements, the school and it's events. This includes hardcopy, digital, audio and video file formats. Placement Includes but is not limited to, placement in school newsletters, email, school and Department of Education intranet and internet sites including social media websites and third party applications, which may enable viewers/readers to identify your child.

If you agree to this use of your child's image and school work, please tick and sign the permissions on the Student Enrolment form.

Once signed, the consent will remain effective until such time as you advise the school otherwise in writing.

If you do not give your permission for your child's image to be published, please discuss this with your child.



Student Online Services Account

Safety Bay Senior High School provides access to Department of Education online services. These enhance the contemporary learning opportunities available to students and the range of teaching tools available to staff to deliver the Western Australian Curriculum.

The school seeks approval for your child to be given access to these online services.

The Department's online services currently provide students with access to:

- individual email and calendar accounts
- the Internet (monitored and controlled student access to websites)
- online teaching and learning services such as Compass and digital resources
- online file storage and sharing services.

These services will also be accessible to your child outside of school.

If you agree to your child using these online services, please tick and sign the permissions on the Student Enrolment Form.

Please explain the content of the Acceptable Use Agreement (see page 18) to your child before signing the declaration on the Student Enrolment form.

Please note that while every reasonable effort is made by Safety Bay Senior High School and the Department of Education to prevent student exposure to inappropriate content when using online services, it is not possible to completely eliminate the risk of such exposure.

You should be aware that the Department of Education has the right to review, audit, intercept, access and disclose messages created, received or sent over Department online services. Logs of email transactions and internet access data are kept for administrative, legal and security purposes and may be monitored. Similar to other corporate records, emails and internet access records are discoverable in the event of legal action and are subject to provisions of the Freedom of Information Act 1992 (www.foi.wa.gov.au).

You should also be aware that general internet browsing not conducted via the Department of Education's network is not monitored or filtered by the Department. The Department encourages close family supervision of all internet use by children in locations other than the school, and strongly recommends the use of appropriate internet filtering software.

Advice on managing internet use at home can be found on the Office of the E-Safety Commissioner website.

www.esafety.gov.au/iparent



Acceptable Use Agreement

Student Agreement

I agree to follow the rules set out below when I use the Department-provided online services.

- I will only use online services for purposes which support my learning and educational research.
- I understand that I am responsible for all activity on my online services account.
- I will check with the classroom teacher before sharing images or giving personal information when using online services.
- I will keep my password private and not share with other students.
- I will not let other people logon and/or use my online account.
- I will tell the classroom teacher if I think someone is using my online account.
- I understand the school and the Department of Education can monitor my use of online services.
- If I find information that is inappropriate or makes me feel uncomfortable I will tell a teacher about it. Examples of such content include but are not limited to, violent, racist, sexist, or pornographic material, or content that is offensive, intimidating or encourages dangerous or illegal activity.
- I will not use the Department's online services for personal gain or illegal activity (eg. music file sharing), to bully, offend, or intimidate others or access or send inappropriate materials including software that may damage computers, data or networks.
- I will acknowledge the creator or author of any material used in my research for school work by using appropriate referencing.
- I will not try to access internet sites that have been blocked by the school or the Department of Education.
- I will use appropriate language in all internet communications.
- I will get permission from the copyright owner of any material used in my school work before I reuse it in a portfolio for employment, in a competition or any other uses other than private research or study.
- I will not damage or disable the computers, computer systems or networks of the school, the Department of Education or any other organisation.

I understand that:

- 1.** I will be held responsible for my actions while using online services and for any breaches caused by allowing any other person to use my online services account.
- 2.** The misuse of online services may result in disciplinary action, determined by the Principal in accordance with the Department's Behaviour Management in Schools Policy.
- 3.** I may be held liable for offences committed using online services.

Parent/Caregiver Agreement

Parents/Caregivers agree to and understand the responsibilities of their child in relation to the use of online services for educational purposes, in accordance with the Acceptable Usage Agreement for Students.

Parents/Caregivers also understand that if their child breaks any of the rules in the agreement, that the Principal may take disciplinary action in accordance with the Department's Student Behaviour Policy and Student Behaviour Procedures.

Third Party Service Providers

Online educational resources are cloud based storage used by teachers across Western Australia to improve student learning outcomes.

Our staff make decisions about the best technology to meet the needs of our students.

With your consent, Safety Bay Senior High School wishes to utilise third party application provider/s to support students' learning.

Your consent will be sought for known applications that are used by students.

As part of the sign-up process, these providers may require personal information to be disclosed to them.

Personal information that may be disclosed about your child includes:

- Student name
- Gender
- Age or date of birth
- Year group
- Class teacher
- Student email

For all school recommended databases students are required to use their Education Department email address only.

As additional providers are utilised, consent forms will be sent home with details about the information we provide to each respective entity, what will be done with it, who else may have access to it, where the data is stored, and links to each provider's terms and conditions and/or privacy policy.

If you have any questions about the storage of your child's information, please contact Administration.



School Carparks

Carparks at the school are not to be used to pick up or drop off students. Please follow the signage upon entrance of the school to ensure flow of traffic. You may also drop off students at the rear of the school, on Georgetown Drive. Please do not enter the staff carpark to drop off or pick up students.

Senior school students driving their own vehicle to school are permitted to park ONLY in the parking provided for public use, or on Georgetown Drive. Please do not park in bays that are labelled for disability access – unless you are able to present an ACROD Parking Permit – or bays that are labelled for visitors.

Scooters and Bikes

A bike rack is provided for storing student bikes and scooters. All bikes and scooters must be stored before school and retrieved at the end of the day. The bike compound will be locked by staff shortly after the beginning of the school day and will remain locked until the end of the day.

Students must provide their own lock and chain to secure their bike or scooter. **The school takes no responsibility for stolen or lost items.**

Students must wear a helmet. Staff will encourage students to be *bike safe*, however it is the responsibility of Parents/Caregivers and students to ensure their safety.

Transperth

Student SmartRider

A SmartRider card is a reusable smart card which allows easy travel on Transperth services. The card enables students to travel on student fares on any trip on Monday to Friday and concession fares at all other times.

SmartRiders are organised through Administration upon commencement. Cards come with a zero dollar balance and will need to have value added to the card before travel.

Go to transperth.wa.gov.au to find out how.

The initial card is provided free. Replacement cards can be ordered through the school.

Plan your Journey

School services change prior to the start of each school year. We recommend waiting until two weeks before the start of school term before planning your journey. You can plan a journey by:

- visiting transperth.wa.gov.au
- downloading the Transperth app available for iOS and Android
- calling the Info Line on 13 62 13

Don't forget to select the 'school bus' option when planning your journey.

Student Dress Code

The Safety Bay Senior High School Student Dress Code Policy is to have a consistent school uniform among students of each year group, leading all the way through senior school.

Wearing a uniform contributes to building pride within our school and among our students.

By enrolling your child at Safety Bay Senior High School, you are making a commitment to support the Student Dress Code Policy.

The current uniform is shown on page 22. The supplier's costs can be found in the Uniform Catalogue on our website.

Our uniforms are supplied by an external provider, Tudor Uniforms, who provide excellent products and service.

The uniform shop is located within the school, next to the Canteen. You can view and try on to ensure correct sizing. The on-site uniform shop is open on **Wednesdays and Fridays, from 7.30am - 9.30am.**

Additional opening days will be available leading up to the commencement of Term 1 each year. These will be advertised through the school's communication channels.

Where families are experiencing financial hardship, please make contact with the school.



Student Dress Code



<p>Shirt</p>	<ul style="list-style-type: none"> • Safety Bay SHS Junior Polo • Safety Bay SHS Junior Specialist Polo (Cheer-Dance and Football) • Safety Bay SHS Senior Polo • Safety Bay SHS Physical Education Shirt
<p>Skirt/Dress</p>	<ul style="list-style-type: none"> • Safety Bay SHS Pleated Skort • Safety Bay SHS Dress
<p>Shorts and Pants</p>	<ul style="list-style-type: none"> • Safety Bay SHS Microfibre Boys Active Short • Safety Bay SHS Microfibre Short Length Active Short • Safety Bay SHS Microfibre Flash Trackpants • Safety Bay SHS Micromesh Boys Shorts • Safety Bay SHS Micromesh Girls Shorts • Safety Bay SHS Fleece Trackpants
<p>Jumpers and Jackets</p>	<ul style="list-style-type: none"> • Safety Bay SHS Microfibre Warmup Jacket • Safety Bay SHS Microfibre Specialist Warmup Jacket (Cheer-Dance and Football) • Safety Bay SHS Softshell Jacket • Safety Bay SHS Fleece Windcheater
<p>Footwear</p>	<ul style="list-style-type: none"> • Closed footwear is required for health and safety reasons
<p>Acceptable Non-School Uniform Items</p>	<ul style="list-style-type: none"> • Navy blue shorts or pants with no logo • Navy blue leggings UNDERNEATH approved shorts • Plain white or navy blue long-sleeve shirt UNDERNEATH approved shirt • Hats
<p>Unacceptable Non-School Uniform Items</p>	<ul style="list-style-type: none"> • Jumpers or jackets without logo • Denim of any kind • Non-navy blue pants or shorts • Leggings NOT UNDERNEATH shorts • Ugg boots, high heels, thongs, slides, sandals • Inappropriate graphics or words

Additional Information

Insurance

Personal Accident Insurance

The Department of Education does not provide personal accident insurance for students while they are at school. Ambulance fees are not covered for students. Parents/Caregivers may obtain personal accident insurance for their child from a private insurer of their choice.

Personal Property

The Department of Education does not have cover for the accidental loss or damage of the personal property of students. Similarly, there is no insurance cover for student property that is stolen.

School Canteen

Our school canteen, The Bay Snack Shack, is an independent, parent-owned business. Their menu can be found on our school website, and caters for dietary restrictions, with specific items on the menu labelled GF (Gluten Free) and V (vegetarian).

Students can make orders in person before 12 noon, or pre-order online on quickcliq.com.au.

The Bay Snack Shack is open from 8.00am - 1.40pm, before school and during break times, Monday - Friday.

Personal Items List

Students are required to bring stationery and other personal items to school each day to enable them to interact in classes.

Booklists will be provided to parents/caregivers prior to the commencement of Term 1 each year, and can also be found on our school website.

You are able to source these items from any supplier, however, if a brand is specified, please consider purchasing the particular item due to the brand's quality and ability to complete the task.



Keep Up to Date

Our **Website** is our online information hub, containing information you may need to know about Safety Bay Senior High School.

www.safetybay.wa.edu.au

Our **Social Media** pages are updated daily with the current happenings at our school.

Follow us on Instagram:
[@safetybayshs](https://www.instagram.com/safetybayshs)

Follow us on Facebook:
Safety Bay Senior High School
Safety Bay SHS Specialist Football Program
Safety Bay SHS Cheer-Dance Specialist Program

Contributions and Charges

Secondary Assistance Scheme

Holders of one of the following cards may be eligible to receive financial assistance to help pay Contributions and Charges:

- Centrelink Health Care Card
- Pensioner Concession Card
- Veterans Affairs Concession Card

Application forms are available from our Accounts Department. Students or Parents/Caregivers need to provide proof of eligibility.

Applications must be completed in Term 1 each school year.

CentrePAY

CentrePAY can be offered free of charge to parents/guardians who receive regular payments from Centrelink. A CentrePAY Account allows you to make regular payments over the duration of the school year. Please contact our Accounts Department for further information.

SaverPlus

You may be eligible if you have a Health Care or Pensioner Concession Card, are at least 18 years old, have regular income from work, and have a child at school or study yourself.

Find out more saverplusebsl.org.au or contact your local Saver Plus Worker on 9265 5585 or thesmithfamily.com.au

Wanslea Grandcarers Scheme

The WANSLEA Grandcarers Support Scheme is an annual payment to grandparents who have the full-time care of their grandchildren. Call 1800 794 909 between 10.00am and 4.00pm Monday to Friday for more information.

Payment Options

- **At Administration Office**

Cash / Cheque / Credit Card / EFTPOS

- **Direct Deposit**

ACCOUNT: Safety Bay Senior High School
BSB: 066 040

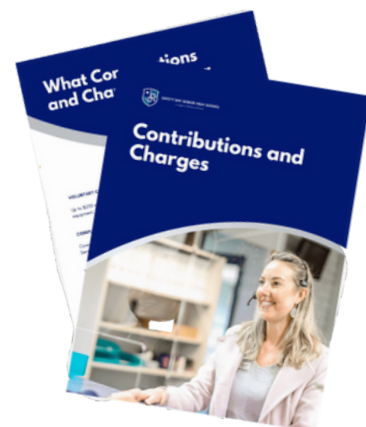
ACCOUNT NO: 19906686

REFERENCE: Student name and purpose of deposit

- **BPoint**

www.bpoint.com.au/bw/payments/SAFETY_BAYSENIORHIGHSCHOOL

REFERENCE: Student name and purpose of deposit





SAFETY BAY
SENIOR HIGH SCHOOL

imagine believe achieve

Safety Bay Senior High School

Malibu Road
Safety Bay WA 6169

Postal Address

Post Office Box 6122 Waikiki WA 6169

Phone

08 9528 9200

Email

safetybay.shs@education.wa.edu.au

Administration Hours

8.00am - 4.00pm
Monday - Friday (during school term)